

TECHNICAL RIDER

Transtaïga

Contact: Francis Colpron / Cell phone: 514.713.9120
Tour responsible on site: Félix Lefebvre / Cell phone: 514.882.5661
felix.lefebvre@videotron.ca

Please note that the following requirements serve to provide the best possible conditions for the artists to perform most effectively. Please contact us immediately if any of these requirements pose a problem. Thank you.

The Company

For the Transtaïga program, the Boréades will comprise four (4) musicians and two (2) actors. In terms of the technical team on tour, the company travels with a technical director/stage manager and a chief lighting designer. The tour team consists of eight (8) people in total.

Typical Day Schedule

- 9AM to 4PM: Technical take-in
- 4PM: Musicians arrive and set up
- 4PM to 6PM: Lighting focus, sound check and video mapping. Small run of sound and video cues.
- 6PM: A meal for 8 people will be provided by the broadcaster prior to the show. Take note that there are vegetarians in the ensemble. No food allergies to report.
- 7PM: Presets
- 7:45PM: Doors opening
- 8PM: Show
- 10PM: End of the show
- 10PM to midnight: Show strike

* The concert consists of a single part of 1 hour and 50 mins without intermission.

** It is important that the opening team of the concert hall mention the following information at the beginning of the show: The show will last 1 hour 50 minutes without interruption. Also, you will hear virtuosos throughout the performance; since this show has been set like a rhythmic score, we ask you to save your applause for the end.

Dressing Rooms

Separate and lockable dressing rooms for men and for women are required.

We require the following:

- Clean towels;
- A clean and working iron and ironing board;
- Tea, coffee, orange juice, flat water, mineral water and snacks (chocolate, fruit, nuts).

CD Sales

A table must be set up at the entrance to the concert hall for the sale of CDs during public concerts. An employee of the concert hall with enough petty cash to make change will be assigned to look after the sale of CDs, books and related products.

Technical Requirements

N.B. For all questions, contact Félix Lefebvre, Technical Director at 514.882.5661.

The equipment listed below (provided by the broadcaster)

1) *The Harpsichord*

To discuss this in advance, please contact Francis Colpron at 514.713.9120.

2) *The sound*

Equipment required:

The musicians of the Boréades play on ancient instruments. A specific amplification and sound environment will be provided by the technical director of the show. If you wish to discuss this point in advance, please contact Félix Lefebvre, Technical Director at 514.882.5661.

Equipment required for amplification and sound:

- a) High quality sound system (High quality P.A. system) E.g.: Meyers/D&B/L-Acoustics
- b) Ten (10) high quality condenser microphones. E.g.: Neumann KM-184, Rhode NT5, AKG-C480b
- c) All appropriate XLR and U-Ground cabling.
- d) 6 large black microphones stands and 4 small black microphones stands.
- e) 4 passive directional boxes or 2 stereo passive boxes (Direct input box)
- f) Four stage monitors

3) Decor (Depending on the size of the theatre set, the presenters may choose version 1 or version 2, which is a reduced version of the decor.)

****Important:** A loading dock or loading door is essential to the arrival of the set at the theatre. Doors must be capable of accommodating 4' wide by 12' high panels. If the room is not on the ground floor, the freight elevator must be capable of accommodating panels of this size.

- Version 1

The set of the show consists of 5 white 4' wide by 12' high panels for a total of 20' wide by 12' high. The entire set will be covered with a white canvas that is placed on the panels with strings pulled back behind.

- Version 2

The set of the show consists of 4 white 4' wide by 12' high panels for a total of 16' wide by 12' high. The entire set will be covered with a white canvas that is placed on the panels with strings pulled back behind.

**** Theater stage size must be a minimum of 28' wide and 18' deep.**

4) Stage equipment

Required:

- a) Six (6) identical stands (adjustable, black with closed backs and opaque)
- b) Seven (7) identical chairs without armrests, preferably black
- c) 2 wooden stools
- d) Two black cubes/small tables
- e) A piano bench (for the harpsichordist)
- f) 1 stage riser 4' X 8'
- g) 6 X 6" legs for the riser
- h) Black velvet stage cuts (2 slices 3' x 10')

5) Lighting

A standard lighting plan is on the last page of this document.

Here is the list of lighting equipment we need for the show. The equivalent can be provided in LED.

- a) 1 X GMA, ETC or STRAND digital lighting console.
- b) 17 Fesnells 1K (Can also have twofers if necessary)
- c) 6 X Lekos 26 degrees

- d) 17 X Lekos 36 degrees
- e) 7 X Lekos 25-50 degrees
- f) 1 X Par64 medium wide
- g) 5 X 8' pipes
- h) 5 X Lighting boom Base
- i) Dimmers required: 53

**** A pre-hanging of the lighting is very important, so that the take-in of the show and focus fit in 6 hours of work.**

6) Video

A projector with a minimum output of 10,000 lumens (10k) with an aspect ratio of 16:9 and 1920 X 1080 (HD) resolution is required to perform the show.

Important Note: It is important that the projector can be hung from the ceiling in a way that it is optimized for the screen and that the angle of the beam does not project onto the performers when they are in place. This must be hung in order to be able to project in the center of the stage and be able to cover a screen 20' wide by 12' high (16:9). If the show is sold in its reduced format, the projector must be able to cover a screen 12' high by 16' wide (4:3).

If the projector in the room hosting the show is equivalent or superior to the technical specifications mentioned above, we will use the projector in place. If a projector of this capacity is not available in the room, the company will take care of renting and transporting the projector with the right tech specs.

7) Rigging

A basic rigging kit (Cheeseborough, Blue Water, steel slings, shackles, quick links, turn buckles) must be provided to ensure a safe rigging of the video projector.

8) Costumes

Due to the costumes on the show, clothes cleaning facilities (washer, dryer, steamer) are requested.

9) Technical team requested

In order to complete the take in and focus in a maximum of 6 hours, here is the technical team that must be provided by the presenter:

Take in and strike of the show:

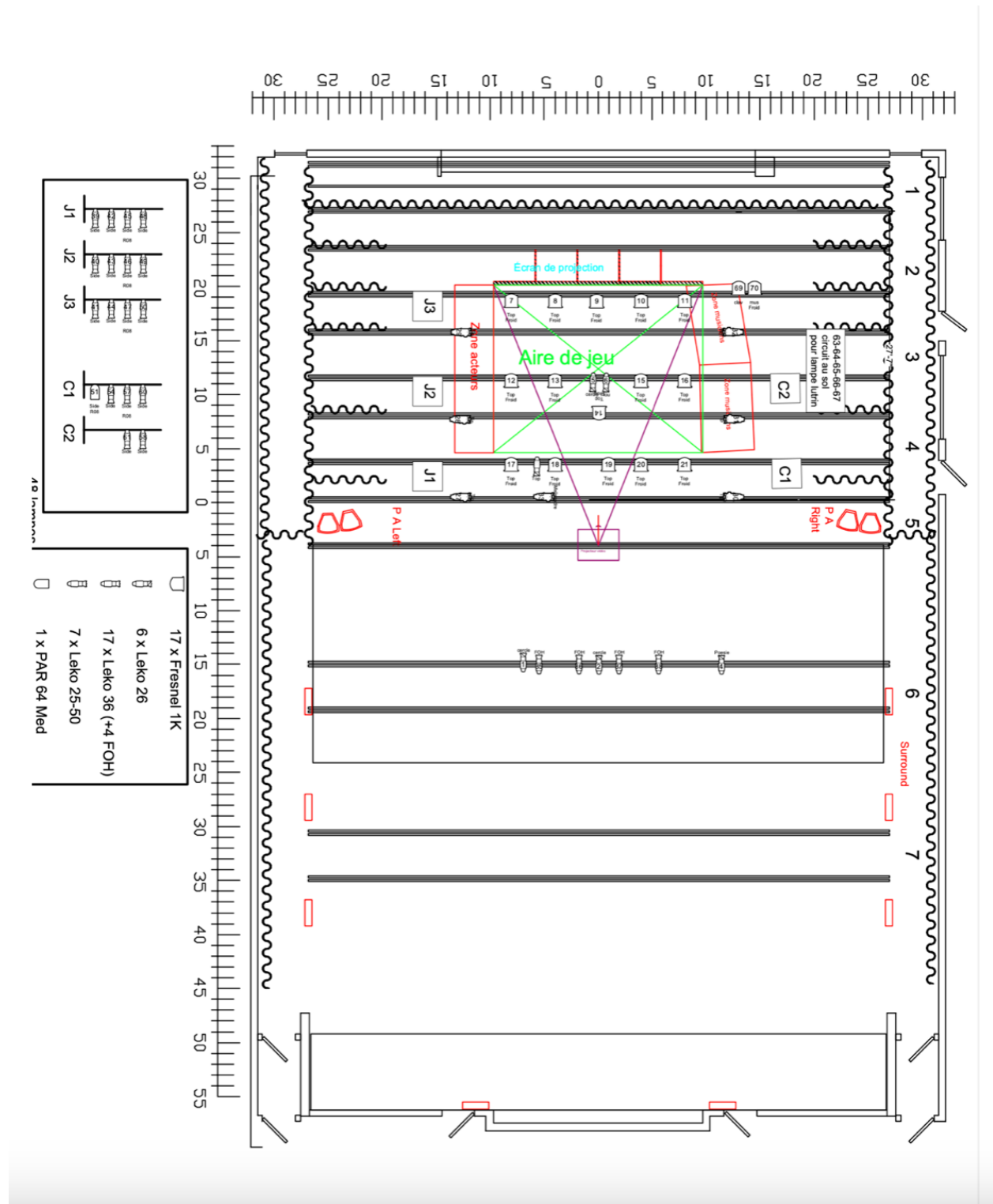
- 1 Technical Director
- 1 lighting manager
- 1 sound manager
- 1 video manager
- 4 general technicians

**In the event that the assembly and show are not on the same day, here is the team to be provided for the show.

Show Day:

- 1 Technical Director
- 1 Lighting Manager
- 1 Sound and Video Manager

Basic floor plan of the show. (**Ceiling height required: 18'. It is possible to adapt to 16')



127, 17th Avenue, Lachine, Québec, Canada H8S 3N7
 T:514.634.1244 F:514.634.1854 / www.boreades.com